

## English Monthly Assignment

Std - IV

September 2024

**Q1. Read the following passage and then answer the following questions:-**

Friends are very important in our lives. We study with them, play with them and even share our lunch with them. One's life would be very boring without friends. Friends also help us a lot. When we cannot solve difficult Maths problems, they are there to help us. When a teacher asks us questions and we cannot answer them, our friends help us. They support us in whatever we do. So, we must have good friends, who will help us to become good human beings.

**A1. Complete the following sentences:-**

- i) We study with them----- them.
- ii) When we cannot solve-----us.

**A2. Choose the correct option:-**

- i) When a teacher asks us questions
  - a) Our friends help us
  - b) Our parents help us

**Q2. Complete the following poem:-**

- 1. Of -----with silk and gold,
- 2. On ----- to cities old,
- 3. Of -----lost,
- 4. Of -----won,
- 5. As time-----beneath the sun.

**Q3. Answer the following questions:-**

- 1. How did Raja Varma feel when the king rewarded him?
- 2. How do we know Anna Maria was a big and strong rat?
- 3. Why does the Happy Prince want to cry all the time? Was he always like this?
- 4. How was Gandhiji going to travel? Why did Dhani find the idea clever?
- 5. Where did Sudarsan start working when he was ten years old?

**Q4. Make a Word – Tree with 5 words:-**

1. at-----, -----,-----,-----,-----
2. he-----,-----,-----,-----,-----

**Q5. Build a Word-Family with 5 words:-**

1. frightened-----,-----,-----,-----,-----
2. everywhere-----,-----,-----,-----,-----

**Q6 Rewrite the following groups of words using an apostrophe:-**

1. the uniforms of the students -----
2. The nests of the birds-----

**Q7 Change the Masculine gender into Feminine gender:-**

1. waiter-----
2. drone-----
3. gander-----
4. drake-----

**Q8. Rearrange the given words to make sentences:-**

1. gate / dog/ our/ sits/the/ at
2. train/our/was/the/at/time/right

**Q9. Fill in the missing degrees of comparison:-**

1. safe ----- safest
2. bright brighter -----
3. useful -----
4. little -----

**Q10. COMPETENCY BASED QUESTIONS**

1. If the Feminine form of God is Goddess; Host is Hostess, then the Feminine form of Lord is
  - a) Lordess
  - b) Lady
  - c) Lowden
2. Circle the odd one out:-  
bee, niece, mare, buck

-----

**Delhi Public School Dhanbad**

**Revision Assignment**

**Class 4**

**Subject: Hindi**

1) निम्नलिखित प्रश्नों के उत्तर लिखें:

क) चांद से पृथ्वी को देखने पर यात्री खुश क्यों हुए?

ख) मित्तल के पापा रेलवे स्टेशन क्यों गए?

ग) गांधी जी पढ़ने में कैसे थे?

2) किसने किससे कहा?

क) "मार से नहीं मुझे अफसोस है कि मैं पिटने योग्य समझा गया"

ख) "आप यह पर्स ऑटो में ही भूल गए थे।"

3) शब्दार्थ लिखें

अज्ञात - प्रतीक्षा-

टोली - अवसर-

4) दी गई भाषाओं की लिपियां लिखे

क) पंजाबी - ख) हिंदी -

5) संयुक्त व्यंजन से एक-एक शब्द बनाएं।

श्र - त्र -

6) लिंग बदले

क) लेखक ख) सहपाठी

7) वचन बदले

क) बच्चा ख) माला

8) विलोम शब्द लिखें

मानव x

मान x

जय x

9) दो दो पर्यायवाची शब्द लिखे

क) बादल ख) रात

ग) नदी घ) फूल

10) अनेक शब्दों के लिए एक शब्द लिखें

क) जो सब कुछ जानता हो

ख) जो लेख लिखता हो

ग) जो पढ़ाता हो

11) मुहावरों के अर्थ लिखें:

क) आँख लगाना

ख) आँखों में धूल झाँकना

12) योग्यता पर आधारित प्रश्न

क) सूर्य किस दिशा में डूबता है?

ख) एक मिनट में कितने सेकंड होते हैं?

ग) यदि आज मंगलवार है तो आने वाला परसों क्या होगा?

13) अनुच्छेद लेखन

ग्रीष्म ऋतु एवं अनुशासन

14) पत्र लेखन

क) अपने छोटे भाई को योगाभ्यास के लाभ बताते हुए पत्र लिखें।

ख) दो दिन विद्यालय में अनुपस्थित रहने की वजह बताते हुए प्रधानाचार्य को पत्र लिखें।

15) अपठित गद्यांश:

पवन एक समझदार और होशियार लड़का था। वह अपने माता-पिता की बहुत इज्जत करता था। हर सुबह उठकर वह अपने माता-पिता के पैर छूता और उनका आशीर्वाद लेता। पवन को पढ़ाई का बहुत शौक था। वह हमेशा समय पर स्कूल जाता और ध्यान से अपनी पढ़ाई करता। उसके सभी दोस्त भी उससे बहुत प्यार करते थे क्योंकि वह सबकी मदद करता था। एक दिन स्कूल में अध्यापक ने पवन की बहुत तारीफ की क्योंकि उसने कक्षा में सबसे अच्छे अंक प्राप्त किए थे। पवन के माता-पिता को उस पर गर्व हुआ और उन्होंने उसे आशीर्वाद दिया कि वह हमेशा ऐसे ही मेहनत करता रहे।

1) निम्नलिखित प्रश्नों के उत्तर गद्यांश पढ़कर लिखें:

क) पवन सुबह उठकर सबसे पहले क्या करता था?

ख) पवन को क्या करना बहुत पसंद था?

2) विलोम शब्द लिखें

शाम x -----

निंदा x-----

3) वाक्य पूरा करें

पवन के माता-पिता को उसे पर \_\_\_\_\_ ।

4) वाक्य बनाएं

क) होशियार ख) मेहनत ग) पढ़ाई

DELHI PUBLIC SCHOOL, DHANBAD

MATHS REVISION ASSIGNMENT – AUGUST 2024

CLASS – IV

1. 6 crates of apples weigh 100 kg. Find the weight of 15 such crates of apples.
2. If the population of a town increases by 42,793 then it will become five lakhs. What is its population now?
3. If 15 buses can carry 910 passengers, how many passengers can be carried in 29 such buses?
4. On her birthday Monica received Rs. 5000 and she spent Rs. 2945.75 on shopping. What amount is left with her?
5. A factory makes 3500 bicycle in 7 days. How many bicycles will it make in 15 days?
6. Sona had Rs. 9,25,100. After she bought a vehicle, she had Rs. 69,340 left. What was the cost of the vehicle?
7. Eggs costs ₹ 36 per dozen. How much will 25 eggs costs?
8. Lalit has one note of each Rs. 2000, Rs. 500, Rs. 100, Rs. 50, and Rs. 10. He also has one coin of each of Rs. 5, Rs. 2, and Rs 1. What total amount does he have?
9. There are 4830 students at a school. If each classroom has 35 students, how many classrooms are there in the school?
10. Write in expanded form:
  - a.) 329010 \_\_\_\_\_
11. Write the answer in Roman numbers:
  - a.)  $5 \times 6 =$  \_\_\_\_\_
  - b.)  $80 - 35 =$  \_\_\_\_\_
12. Multiply seven hundred sixty-nine by three hundred twenty-two.
13. Find the difference: 
$$\begin{array}{r} 725704 \\ - 19834 \\ \hline \end{array}$$
14. Draw a circle of radius 3.5 cm
15. Find the quotient and remainder, when Dividend = 6840 and Divisor = 47
16. Write True or False for the following:
  - a.) A square is a quadrilateral \_\_\_\_\_
  - b.) A hexagon has 6 sides \_\_\_\_\_
  - c.) All the sides of a rectangle are equal \_\_\_\_\_
17. Find the place value of
  - a.) 165947 = \_\_\_\_\_
  - b.) 823589 = \_\_\_\_\_
18. A circle has a radius of 4 cm. How long is its diameter? (Show the process)
19. Arrange in descending order : XLVIII, L, XL, LXIX
20. Competency Based Questions:
  - a.) If seven cats kill seven rats in 7 minutes, how much minutes would be needed to kill such 100 rats?
    - i. 7
    - ii. 17
    - iii. 100
    - iv. 200
  - b.)  $285 \times 10 \times 0 \times 789 =$  \_\_\_\_\_
  - c.) How many hundreds should you multiply to 700 to get 70000?
    - i. 1
    - ii. 7

**iii. 11**

**iv. 10**

- d.)  $8 \times 4 \times 3 = \text{_____} \times 12$  [think and write]
- e.) Predecessor of the smallest 5-digit number = \_\_\_\_\_
- f.) Find the time duration between:
- i. School starting at 7:15 am and finishing at 2:20 pm.
- g.) Symbols of Indian Currency are \_\_\_\_\_ and \_\_\_\_\_.
- h.) The price of 1 dozen bananas is Rs. 84. What is the price of 1 banana?
- i.) 6 hours have \_\_\_\_\_ minutes.
- j.) Name a solid with:
- i. No vertex
- ii. 5 vertices

ASSIGNMENT

Name: \_\_\_\_\_ Sec: \_\_\_\_\_ Roll No. : \_\_\_\_\_

(I) Define the following terms:-

- a) Guard cells
- b) Xylem
- c) Parasitic plants
- d) Nutrients
- e) Roughage
- f) Volume

(II) Give reasons:-

- a) Sugar seems to disappear when it is put in water.
- b) Vitamins and minerals are called protective food .
- c) Proteins are called body building foods.
- d) Cacti conserve water.
- e) Dodder cannot make their own food.

(III) COMPETENCY BASED QUESTIONS:-

- a) Saprophytic Plants: mushrooms :: Parasitic Plant: .....
- b) ..... : Cactus: Insectivorous plant : pitcher plant.
- c) Proteins : Egg : : ..... : Rice.
- d) Baking : Cake :: .....,..... : Pulses.
- e) Solute : Sugar :: Solvent : .....

(IV) Answer the following questions:-

- (1) What is miscible and immiscible liquids?
- (2) What are the properties of matter?
- (3) How can we take care of our teeth?
- (4) What is the importance of food?
- (5) What is photosynthesis?



## Monthly and Revision Assignment

### CLASS -4,SST

#### Q1.F.I.T.B

- A.Expressway are also called \_\_\_\_\_ in Germany and \_\_\_\_\_ in Britain.
- B.Lord Dalhousie laid the first Railway line between \_\_\_\_\_ and \_\_\_\_\_.
- c. \_\_\_\_\_ are also known as Trunk Roads.
- d. Grid help us to identify the \_\_\_\_\_ of \_\_\_\_\_.
- e. Art of Mapmaking is called \_\_\_\_\_.
- f. \_\_\_\_\_ made map on metals.
- g.The oldest surviving map dates to about \_\_\_\_\_ BC.It is painted on a wall in \_\_\_\_\_.
- h. Colours on a physical map indicate the land \_\_\_\_\_.
- i) \_\_\_\_\_ map shows Natural Resources.

#### Q2.True and false

- a)We can call an ambulance by dialling 102.( )
- b)ATM means Automated Teller Machines.( )
- C)Frieghters are ship that carry passengers. ( )
- d)Luxury liners are large ships that carry heavy loads.( )
- e)The Wright Brothers in America made the first plane and flew in 1908.
- f)The word map is derived from the Latin word Mappo.( )
- g) A compass rose is an instrument that shows temperature. ( )
- h)We should renew our ration cards.( )
- i)The climate of India is tropical ( )

**Q3. Define- Means of transport, Trunk Road, Toll roads, Broad gauge train, Metra Gauge Train, Narrow gauge train, Inland transport, ports, Tankers, beat, public utility services, subsidized, Map, Globe, compass rose, Grid, Map Scale, large scale map, Map Legend, Thematic Map, Meteorological map Economic Map, Political map, Physical Map, transport Map.**

**Q4. Give Reason:**

**A. Water transportation is popular in India \_\_\_\_\_**

**B. Roads are convenient way to travel \_\_\_\_\_**

**C. The policeman are the guardians of the law \_\_\_\_\_**

**D. Banks are useful to us \_\_\_\_\_**

**E. Maps are important tools of Geography \_\_\_\_\_**

**F. Grid help to locate absolute location \_\_\_\_\_**

**G. Colours are important tool of physical map \_\_\_\_\_**

**H. Map key or Map legend is important tool of any Map \_\_\_\_\_**

**Q5. Draw and label:**

**Grid, Map Legend, Compass Rose, any one public utility service,**

**One means of land, water, and air transport.**

**Q6. Locate on the map of India:**

**2 states where coal, lignite, petroleum, Natural Gas, Refineries.**

**Capital of Delhi, 2 Neighbours of India, Uttar Pradesh, Capital of**

**Rajasthan, State of Jharkhand, Capital West Bengal.**

**Peninsular Plateaus of Physical India, Eastern Ghats, Desert**

**Region, Great Mountain zone, Plains of Ganga.**

**Q7. Ques Ans**

**1. What does a transport Map show?**

**2. What do the colours on a physical map signify?**

**3.What are cardinal directions?**

**4.What are large scale maps?**

**5.State a difference between globe and map.**

**6.How can we care for our school?**

**7.What is our duty towards postal services?**

**8.Define Map Scale.**

**9.Describe any four different types of ships.**

**10.Name the different types of roads found in India.**

**Q8.CBQ:**

**Compass rose: direction::Scale:\_\_\_\_\_**

**Art of making map:\_\_\_\_\_::A book of Map:\_\_\_\_\_**

**North South East West:Cardinal Direction::\_\_\_\_\_:Sub  
Direction**

**Large maps: large scale maps::\_\_\_\_\_ :small scale maps**

**Public Vehicle:Bus::\_\_\_\_\_ : Car**

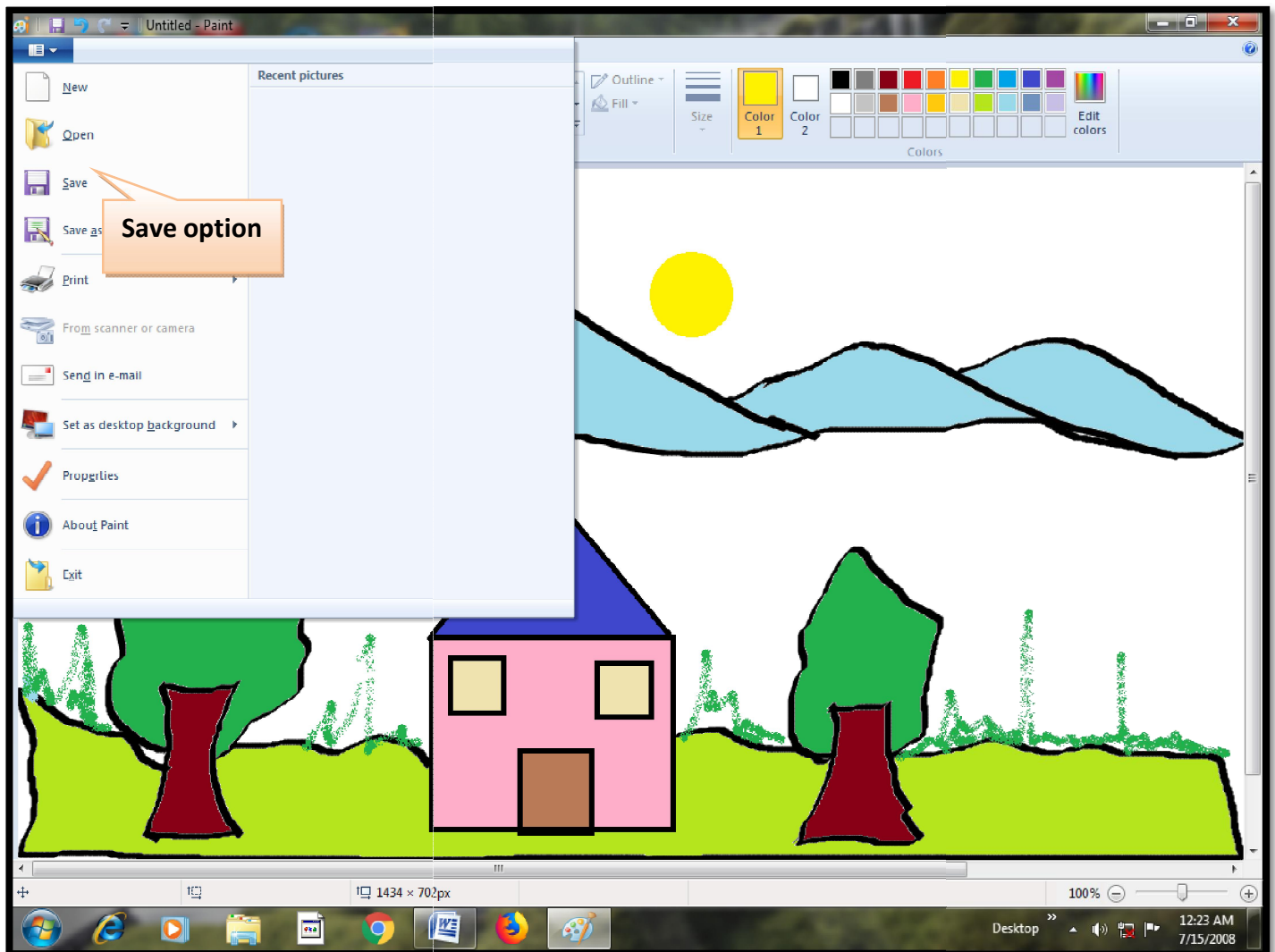


## Working with Windows 10

### Files and Folders

A collection of related information stored together in the storage devices like hard disk, CD, DVD, or Pen drive is known as \_\_\_\_\_. Any information in a computer is saved in the form of a \_\_\_\_\_. Each file is given a \_\_\_\_\_ when saved which make us easier to find the required file. They have extensions like “.docx”, “.mp3”, “.Bmp”, “.pptx”

### Steps to create a file:



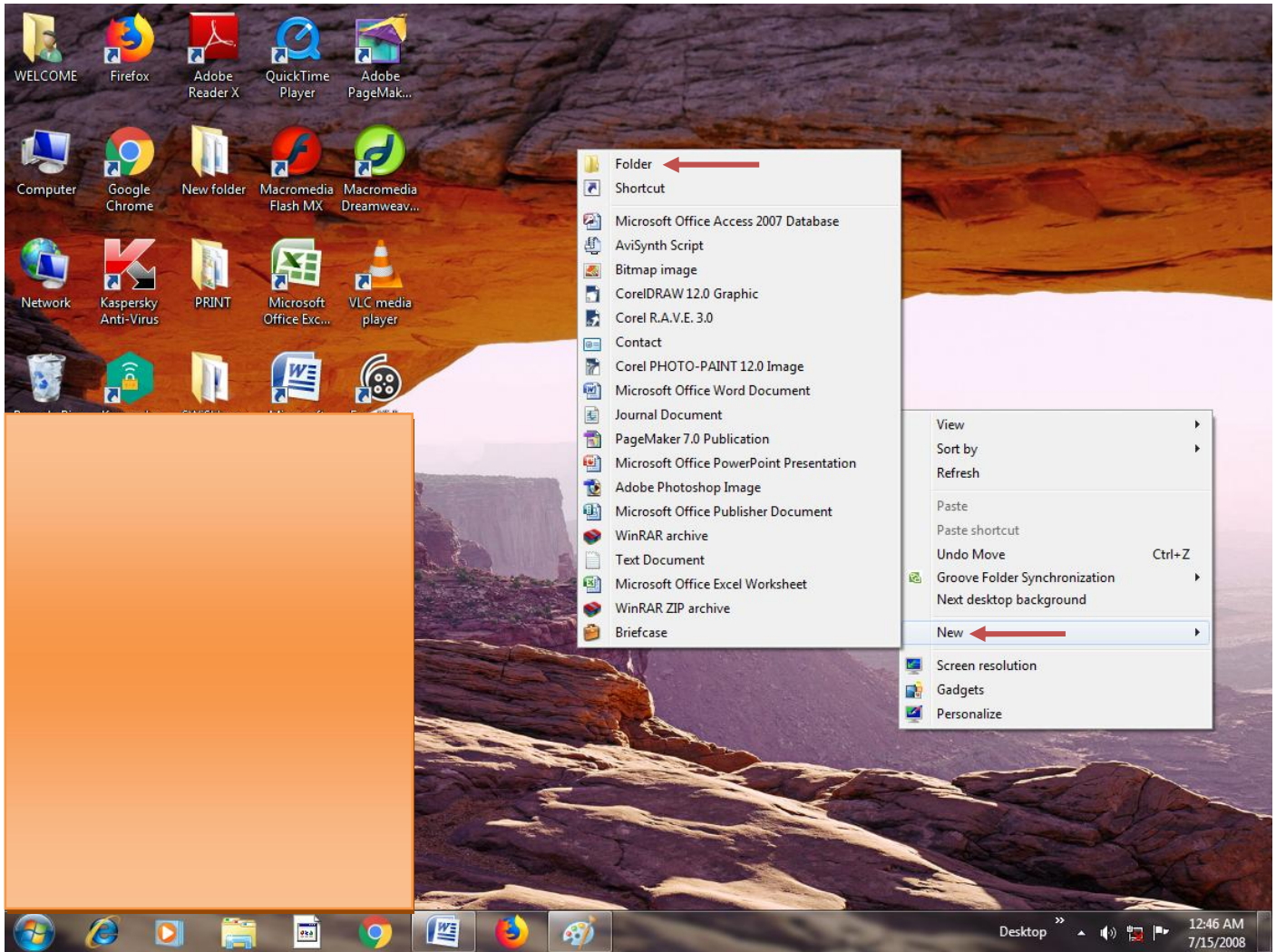
The steps to create a file by using any application software. Say for example when Paint software is used

- Open Paint software. A drawing/ blank area is displayed;
- Draw a scenery;
- After completing your work, save your file using the \_\_\_\_\_ tab → \_\_\_\_\_ option and type a name in the \_\_\_\_\_ dialog box. This creates a file.

As we keep our files in cupboard in an organized way, similarly \_\_\_\_\_ works as a cabinet or a storage unit in a computer where the relevant files are kept. \_\_\_\_\_ acts as a container for files and other folders.

We can create new folders or sub-folders within a \_\_\_\_\_. It occupies zero space and do not have any extension.

### Steps to create a Folder :



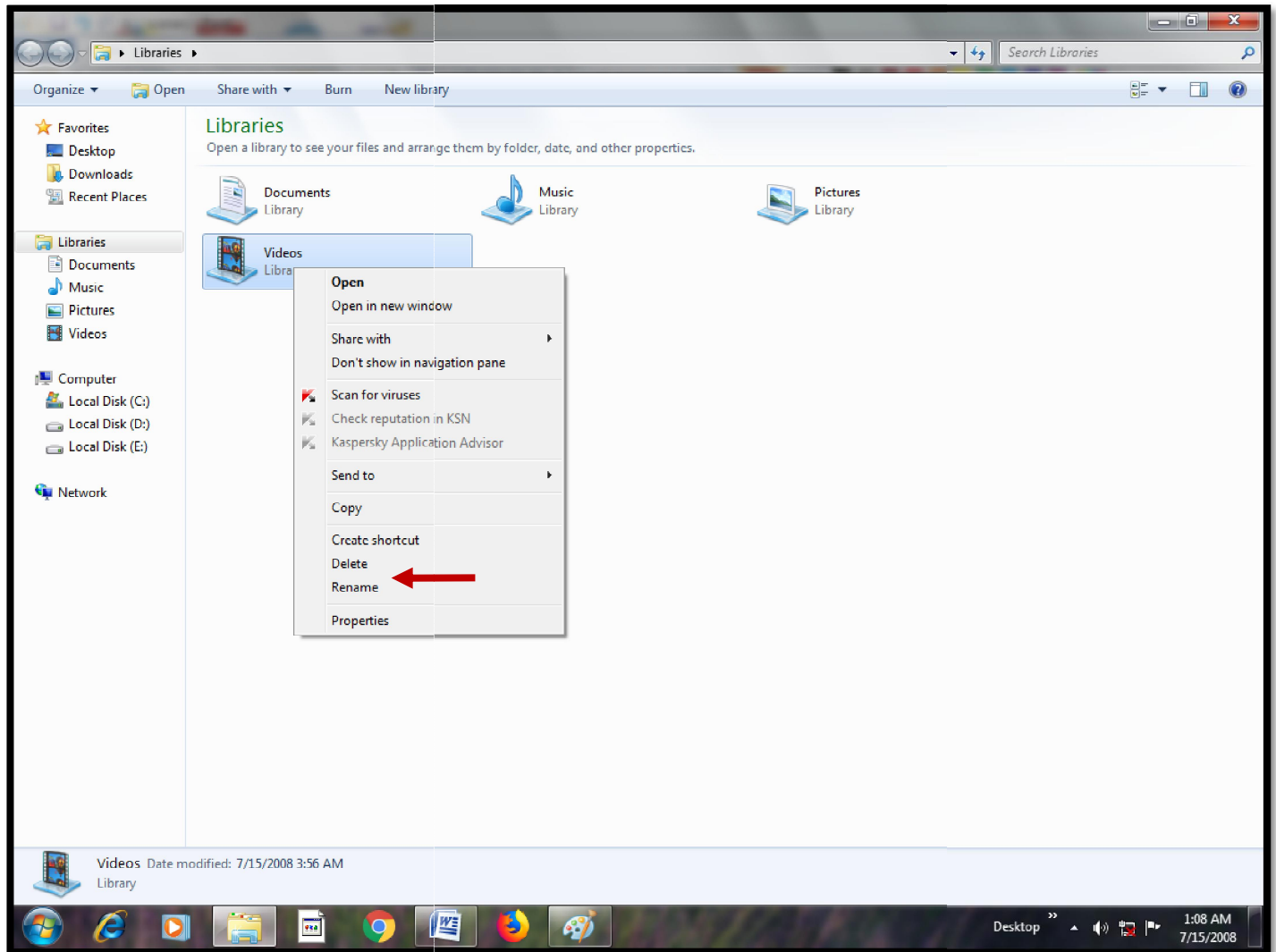
- Right click on the blank area of the \_\_\_\_\_.
- A \_\_\_\_\_ menu appears;
- Bring the pointer on the \_\_\_\_\_ option
- Click on the \_\_\_\_\_ option. A new folder icon will be displayed ;
- Type a \_\_\_\_\_ for the folder at the cursor position and press 'Enter' key;
- A new folder is created.

## Steps to open a File/Folder:

To open a file or folder, bring the pointer to the required file/ folder and \_\_\_\_\_ on it. The file/folder will open and you can see the contents present on it.

## Renaming a File/ folder

\_\_\_\_\_ means to change the name of the existing file/ folder.



## Steps to rename any file/ folder

- Right click on the desired file/ folder;
- Select the \_\_\_\_\_ option from the shortcut menu;
- The file/ folder name will be highlighted
- Delete the existing name OR type the new name that you wish to give to the file or folder.

## I. Fill in the blanks:

- 1) A \_\_\_\_\_ unit is the most important unit of a desktop computer.
- 2) A \_\_\_\_\_ is an interface between the motherboard and an external device of the computer.
- 3) The shortcut icon has a small jump \_\_\_\_\_ on its lower left corner.
- 4) The \_\_\_\_\_ options like Bold, Italic and Underline are used to emphasize the text and draw the reader's attention.
- 5) The first version of Microsoft Word was released in \_\_\_\_\_.
- 6) A \_\_\_\_\_ Desktop is one of the most important features of Windows 10.
- 7) The \_\_\_\_\_ tab under Stickers tool contains different types of textures.
- 8) The \_\_\_\_\_ tool is used to add 3D text on the Canvas.

## II. Write short note on:

- |                  |                     |
|------------------|---------------------|
| a) Byte          | b) Secondary Memory |
| c) Shortcut Menu | d) Virtual Desktop  |
| e) Formatting    | f) Alignment        |
| g) Paint 3D      | h) Animation        |

## III. Answer the following:

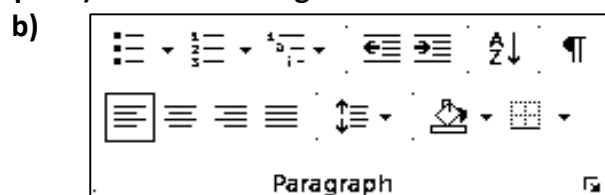
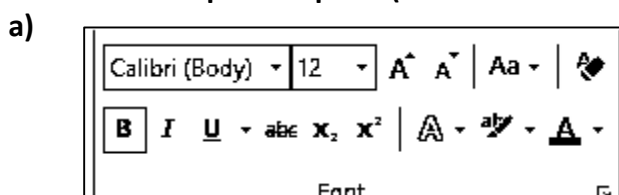
- a) Write one difference between RAM and ROM.
- b) What is the use of secondary memory?
- c) Write any 4 features of Windows 10.
- d) How do you change the system date?
- e) What is the use of Find and Replace option?
- f) What is the use of Undo and Redo options?
- g) How will you add texture in a 3D shape?
- h) How will you add a 3D text on the Canvas?
- i) Write the storage capacities: (i) DVD      (ii) Bu-ray disc      (iii) Pen Drive      (iv) Memory Card      (v) Hard Disk      (vi) SSD
- k) Write the keyboard shortcut for the following actions:
 

(i) To find Navigation Pane	_____	(ii) For Find and Replace dialog box	_____
(iii) For spelling and grammar checking	_____	(iv) Bold	_____
(v) Italic	_____	(vi) Underline	_____

## IV. Draw the following:

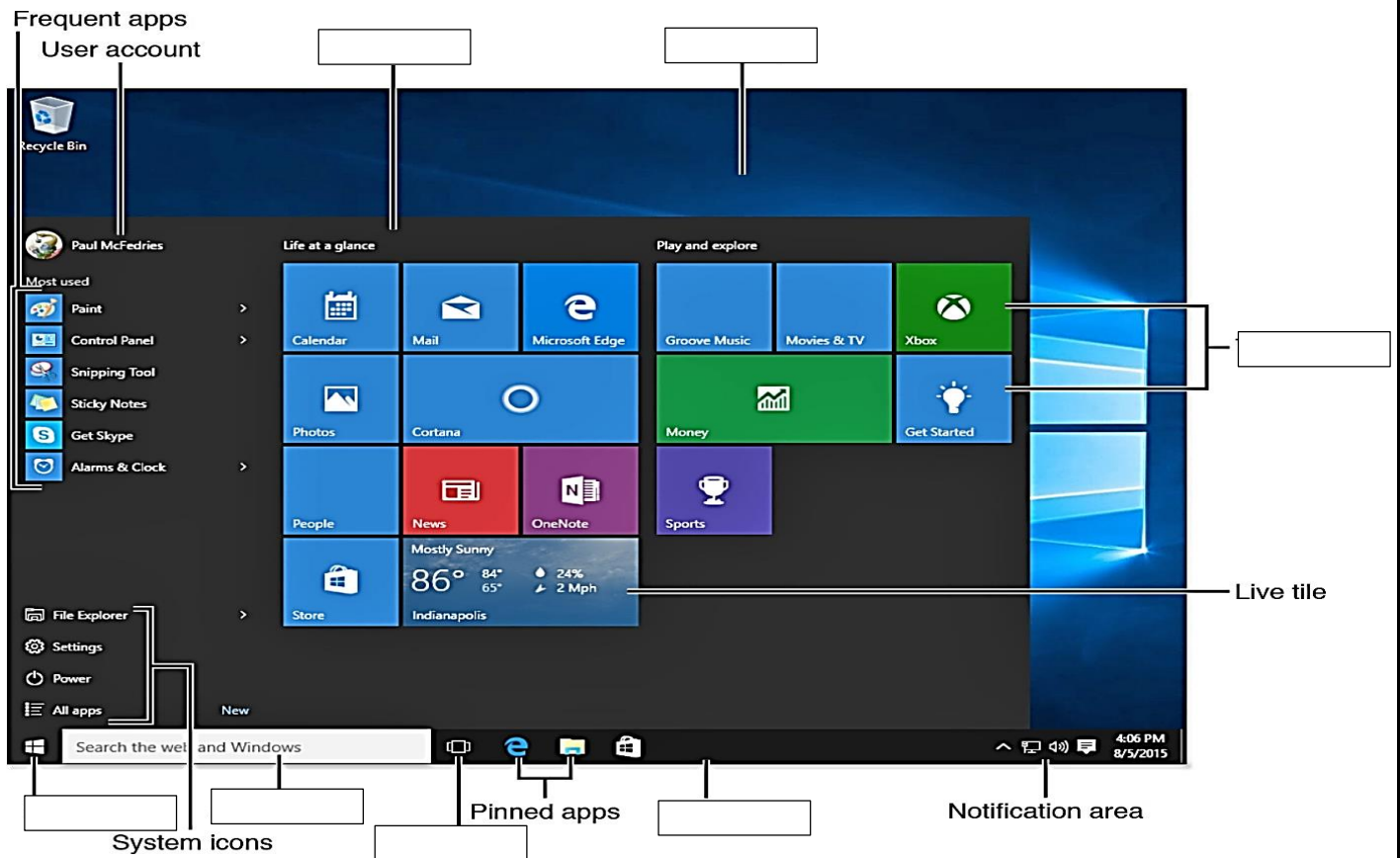
- |                             |                                    |
|-----------------------------|------------------------------------|
| a) 2 primary memory devices | b) 2 secondary memory devices      |
| c) Task View icon           | d) Clock icon                      |
| e) Replace icon             | f) Spelling and Grammar            |
| g) Undo icon                | h) Redo icon                       |
| i) Paint 3D icon            | j) 6 animation effects in Paint 3D |
| k) Stickers icon            | l) Texture icon                    |

## V. Label the important parts (mentioned in the chapters) of the following:





c) Windows 10 Desktop



1. Suppose that it may rain or may not rain in the afternoon. Also, you could wear one of 3 shirts while going out at the time. What are the different combinations possible for rain status and shirt worn?

- (a) 5
- (b) 6
- (c) 7

2. Out of all 2 digit numbers, how many numbers are even?

- (a) 43
- (b) 44
- (c) 45

V. Complete the patterns given below:

1) 3    5    7    \_\_\_\_\_

2) 101        201    301    \_\_\_\_\_

3) WINK        SINK        \_\_\_\_\_

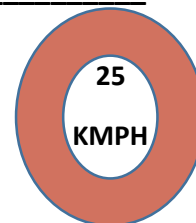
4) PAINT        CHAIN        \_\_\_\_\_

VI. Answer the following:

1) How many shoes do 5 normal women wear?

2) Find the odd one out: 20, 40, 50, 80, 100

3) What is represented by the road sign given alongside?



4) If the product of 4 numbers is 12, the product of 3 other numbers is 0 and the product of the next 4 numbers is 28, then which group surely contains a 0 member in it?

5) Find the missing one in the sequence:

