

SST class 5

November Monthly Assignment

Q1 Name the person/party who gave the slogan.

- a. " Purna Swaraj" _____
- b. " First they ignore you, then they ridicule you, then they fight you and then you win" _____
- c. "Give me blood and I will give you freedom"
- d. " Do or Die"
- e. "Swaraj is my birth right and I shall have it."

Q2 Answer the following questions:

- a. When was the first session of Indian National Congress held and where?
- b. Who formed the Indian National Army?
- c. Who led the Revolt of 1857?
- e. Name two revolutionaries.
- f. What is a map legend?

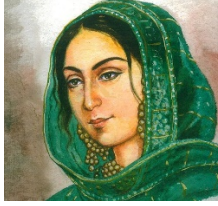
Q3 Name the :

- a. movement launched by Indian National Congress against the partition of Bengal.
- b. Name the person who composed vande matram.
- c. Name the movement launched by Gandhiji to disobey Laws peacefully.
- d. Name the movement launched by Gandhiji which led to Dandi March.
- e. Name the movement during which Gandhiji asked the people to " Do or Die"
- f. Name the different types of maps.

Q4 Name the important dates:

- a. India became independent in _____
- b. Gandhiji was born in _____
- c. Partition of Bengal _____
- d. Reunion of Bengal _____
- e. Mohan Das Karamchand Gandhi returned to India from South Africa _____
- f. Jallianwala Bagh massacre _____
- g. Demand of Purna Swaraj by Indian National Congress _____
- h. _____ ordered firing in Jallianwala Bagh.
- i. _____ are used to show mountains and highlands.

Q5. Identify the pictures given below:



Name: _____ Class : _____ Roll No. : _____

CLASS : V

NOVEMBER ASSIGNMENT

SUB:SCIENCE

I. DEFINE THE FOLLOWING TERMS:-

1. Immunity
2. Vaccination
3. Hygiene
4. Disease
5. Vectors

II. GIVE REASONS FOR THE FOLLOWING:-

1. We should not share handkerchief and towel with others.
2. Water should not be allowed to collect in or around the house.
3. We should not take excess of fat soluble vitamins.

III. COMPLETE THE GIVEN TABLE:-

NUTRIENTS	DISEASES	SOURCES
Sodium		
	Anaemia	
		Citrus Fruits
Vitamin K		
		Sunlight
	Goitre	

IV. GIVE TWO EXAMPLES OF DISEASES THAT SPREAD THROUGH THE FOLLOWING:-

1. Contaminated food and water –
2. Air –
3. Direct Contact -
4. Animal Bite -
5. Insects –
6. Viruses-
7. Protozoa -
8. Bacteria –

V. DRAW, LABEL AND COLOUR:-

1. Two sources of :-
 - a. Vitamin E
 - b. Calcium
 - c. Potassium

MATHS MONTHLY ASSIGNMENT

Class – V

- 1) Reduce in simplest form :- (a) $\frac{38}{95}$ (b) $\frac{46}{60}$
- 2) Find out the greater fraction :- $\frac{8}{9}$, $\frac{23}{13}$
- 3) Arrange in ascending order :- $\frac{4}{12}$, $\frac{8}{4}$, $\frac{13}{2}$, $\frac{5}{6}$
- 4) Arrange in descending order :- $\frac{1}{6}$, $\frac{3}{12}$, $\frac{7}{9}$, $\frac{2}{3}$
- 5) Add :- $1\frac{2}{5}$, $2\frac{3}{10}$, $3\frac{1}{5}$
- 6) Subtract :- (a) $4\frac{1}{9}$ from $6\frac{2}{3}$
(b) $2\frac{3}{4}$ from $5\frac{2}{3}$
- 7) Simplify :- $3\frac{5}{4} - 1\frac{11}{12} + 2\frac{1}{3}$
- 8) Subtract the sum of $5\frac{1}{2}$ and $3\frac{3}{8}$ from the sum of $7\frac{3}{4}$ and $6\frac{1}{2}$.
- 9) What must be added to $7\frac{1}{6}$ to get $11\frac{1}{9}$?
- 10) Revise tables till 25.

English Monthly Assignment (November)

Refer to the New Buzzword Workbook chapter 7“ A Lucky Escape“ and chapter 8 “The Invisible Man”do as instructed. (All work to be done in the workbook itself)

READING

- A. Answer these questions
Nos 1 to 5 on pages 47& 48
- B. Complete these sentences with antonyms of the given in the brackets from the passage.
Nos. 1to 3 on page 48

VOCABULARY

Tick the correct preposition to complete these sentences. Nos. 1 to 5 on pages 50 & 51

SPELLINGS

COMPLETE these sentences with words beginning with str nos. 1 to 5 on page 52

READING

- A. Complete this table with what happened immediately before or after the events mentioned. On pages 54 & 55
- B. Write down the meanings of these words from the passage
 - 1. Continuous
 - 2. Worse
 - 3. Visible

VOCABULARY

- A. Replace the highlighted words in each sentence with one word. Use the clues given in the brackets. Nos 1 to 6 on page 57
- B. Match the adjectives in the first column with the nouns in the second column and write the adjective – noun collocations in the third column. Nos 1 to 5 on page 58

SPELLINGS

Look at the clues and complete these words. All these words contain the silent letter L. Nos. 1 to 5 on page 58

COMPETENCE BASED QUESTION (to be written on page 52)

Tick the correct choice:-

1. Brinjal, cauliflower, tomato, ladyfinger

2. Turnip, radish, cucumber, carrot

3. Girl, lady, mare, aunt

4. What goes up and never comes down

Age, aeroplane, bird, paper

5. Complete the pattern:-

AC, BD, CE, _____

Z26, Y25, X24, _____

XXXXXXXXXXXXXXXXXXXXXXXXXXXX



Q1. Fill in the blanks:

a. PowerPoint Presentation is the combination of various

- (i) Images (ii) Components (iii) Graphics (iv) Slides

b. Shortcut key to create a duplicate slide is

- (i) Shift +D (ii) CTRL+D (iii) Alt+D (iv) Ctrl+D

c. Backstage view is the window that opens on clicking this tab:

- (i) Home (ii) Layout (iii) File (iv) View

d. You can customize the theme from this category

- (i) Applying a Theme Variant (ii) Layout (iii) Slide Design (iv) Background

e. Which of these is an animation effect in PowerPoint?

- (i)  (ii)  (iii)  (iv) 

Q2. Write the key combinations with the help of clue provided:

CTRL+D CTRL+N CTRL+A CTRL+SHIFT+> CTRL+SHIFT+< ESC

a. To select all objects

b. To create a duplicate slide

c. To open a new blank presentation

d. To increase a font size

e. To decrease a font size

f. To start a Slide Show

f. To stop a Slide Show

Q3. Create a presentation on 'Energy Saving' using theme customization and add pictures related to the topic.

Paste 2-3 pictures of the slide.



Delhi Public School, Dhanbad

Monthly Assignment(November)

Subject: Computer

Std:V



Q1.Fill in the blanks:

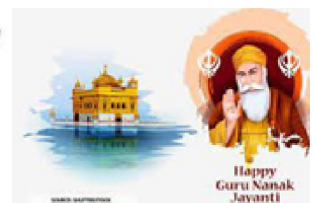
- The _____ presentation option allows us to create and format slides.
- Click on the _____ tab and select _____ option to create and format slides.
- You can easily move the placeholder when the mouse pointer becomes a _____ arrow.
- _____ provide a blueprint for a presentation that can be easily modified.
- PowerPoint 2019 offers _____ different views to change the appearance of your presentation on the screen
- _____ is the default view of a presentation.
- The Slide navigation pane contains the _____ of the slides.

Q2.Give one word answer:

- This pane contains the larger view of the active slide along with the Notes Pane.
- In this view ,you can see a smaller view of all the slides of a presentation.
- It is used to view a presentation in the form of a Slide Show, but not on the full screen.
- This view is commonly used when you want to view your speaker notes in a page view.
- It refers to the positioning of the text with the edges of the text placeholder.
- It is used to change the orientation of the text in a placeholder.
- It is used to align the text between top and bottom edges of a placeholder.
- You can insert online pictures to your presentation by using _____

Q3.Write the tab and group of the given options:

Options	Tab	Group
Text Box		
New Slide		
Text Alignment		



Q4.Name the five different views that is used to change the appearance of your presentation on the screen.

Q5.Name the four basic alignment options that are used to align the text in a slide.

Q6.Name the four options of Text Direction.

Q7.Give three examples of Slide Layouts.

Q8.Name and draw six different Icons present in Title and content Layout.

Q9.Write the key combinations for the following:

- a.To create a new presentation: _____
- b.To save a presentation: _____
- c.To open an existing presentation _____
- d. To run the slide show _____
- e. To stop the Slide Show _____
- f. To insert a new slide _____
- g.To exit PowerPoint _____

Q10. Answer the following questions:

- a. Write the steps to add pictures in a presentation.
- b. Write the steps to create additional text placeholders in a slide.

Q11.Draw the icons of:

- a.Normal View b. Outline View c.Align Left d.Align Right e.Center f.Justify
- g.Top h.bottom i.Rotate all text 90°j.Stacked k.New Slide l. Text Box
- k.Online Pictures l.Insert Chart m.Insert Table n.Insert SmartArt



Q1.Convert the following binary numbers into decimal

- a. 100 b. 110 c. 111 d.11111 e.101010 f. 1011

Q2. Convert the following from Decimal to binary)

$$2 \mid 70$$

The binary equivalent of 70 is _____



1. संस्कृतेन अनुवादं कुरुत ।

क. रमेश देखता हैं ।

ख. वह फूल खिलता हैं ।

ग. वह खाती हैं ।

घ. वह हँसता हैं ।

ङ. यह गुलाब हैं ।

2. उचितं क्रियापदं चिनुत ।

1. सः — । चलति / पठतः ।

2. नृपः — । रक्षति / रक्षतः ।

3. प्रिभा — । पठति / पठतः ।

4. इदम् — उद्यानम् । अस्ति / स्तः ।

5. लघः बालकः — । ध्यावतः / ध्यावति ।

6. पुष्पाणि — । विकसति / विकसन्ति ।

3. रिक्त-स्थानं पूरयत ।

1. द्वात्रः गुरुं — ।

2. सा अजा — ।

3. अयम् अश्वः — ।

4. वृक्षात् फलं — ।

5. इदं पुष्पं — ।

6. सारमेयः — ।

दिल्ली पब्लिक स्कूल
मासिक कार्यभार

विषय - हिंदी

कक्षा - पंचम

प्रश्न-1 कम शब्दों में उत्तर दें।

- क. तनिषा को क्या देखकर दुख हुआ?
- ख. तनिषा ने पत्र के साथ क्या भेजा था?
- ग. पॉलीथिन के प्रयोग पर प्रतिबंध किसने लगाई थी?
- घ. पॉलीथिन की सबसे बड़ी कमी क्या है?
- ङ. पॉलीथिन के कारण किसकी जान चली गई?

प्रश्न-2 शब्दार्थ लिखें। क.अनमोल, ख.निर्दोष, ग. स्वच्छ, घ. समस्या ड. प्राकृतिक, च. सराहनीय, छ. गंभीर,ज. प्रतिबंध

प्रश्न-3 अशुद्ध शब्दों को शुद्ध करें।

- क. आयू, ख. दुध, ग. वापिस, घ. परिक्षा, ङ. क्यूंकि, च. कृप्या, छ. अकाश, ज. साधारन

प्रश्न-4. विलोम शब्द लिखें।

- क. वीर, ख. कृतज्ञ, ग. धर्म, घ. स्वाधीन, ङ. विस्तृत, च. बलवान, छ. उपकार, ज. स्वतंत्र

प्रश्न-5 दिए गए शब्दों के दो अर्थ लिखें। (अनेकार्थी)

- क. सर, ख. माल, ग. घन, घ. दल, ङ. पर, च. साल, छ. पत्र, ज. मधु

प्रश्न-6 निम्नलिखित मुहावरों के अर्थ लिखें।

- क. डूब मरना, ख. नाक में दम करना, ग. लोहा लेना, घ. चार चाँद लगाना, ङ. हाथ धोना

प्रश्न-7 श्रुतिसम भिन्नार्थक शब्द के अर्थ लिखें।

- क. नियत - नीयत, ख. सुर - सूर, ग. समान - सामान, घ. कपट - कपाट, ङ. कृपण - कृपाण

प्रश्न-8 क्रिया विशेषण शब्द से रिक्त स्थान की पूर्ति करें।

- क. लड़की ----- दौड़ती है।
- ख. मीना ----- गीत गाती है।
- ग. ईशा ने ----- अपने बाल साफ किए।
- घ. वह ----- पार्क की ओर चली गई।

प्रश्न-9 पृष्ठ संख्या 67 से 80 तक सुलेखन लिखें।

दिल्ली पब्लिक स्कूल
मासिक कार्यभार

विषय - हिंदी

कक्षा - पंचम

प्रश्न-1 कम शब्दों में उत्तर दें।

- च. तनिषा को क्या देखकर दुख हुआ?
- छ. तनिषा ने पत्र के साथ क्या भेजा था?
- ज. पॉलीथिन के प्रयोग पर प्रतिबंध किसने लगाई थी?
- झ. पॉलीथिन की सबसे बड़ी कमी क्या है?
- ञ. पॉलीथिन के कारण किसकी जान चली गई?

प्रश्न-2 शब्दार्थ लिखें। क.अनमोल, ख.निर्दोष, ग. स्वच्छ, घ. समस्या ड. प्राकृतिक, च. सराहनीय, छ. गंभीर,ज. प्रतिबंध

प्रश्न-3 अशुद्ध शब्दों को शुद्ध करें।

- ख. आयू, ख. दुध, ग. वापिस, घ. परिक्षा, ड. क्यूंकि, च. कृप्या, छ. अकाश, ज. साधारन

प्रश्न-4. विलोम शब्द लिखें।

- ख. वीर, ख. कृतज्ञ, ग. धर्म, घ. स्वाधीन, ड. विस्तृत, च. बलवान, छ. उपकार, ज. स्वतंत्र

प्रश्न-5 दिए गए शब्दों के दो अर्थ लिखें। (अनेकार्थी)

- ख. सर, ख. माल, ग. घन, घ. दल, ड. पर, च. साल, छ. पत्र, ज. मधु

प्रश्न-6 निम्नलिखित मुहावरों के अर्थ लिखें।

- ख. डूब मरना, ख. नाक में दम करना, ग. लोहा लेना, घ. चार चाँद लगाना, ड. हाथ धोना

प्रश्न-7 श्रुतिसम भिन्नार्थक शब्द के अर्थ लिखें।

- ख. नियत - नीयत, ख. सुर - सूर, ग. समान - सामान, घ. कपट - कपाट, ड. कृपण - कृपाण

प्रश्न-8 क्रिया विशेषण शब्द से रिक्त स्थान की पूर्ति करें।

- ड. लड़की ----- दौड़ती है।
- च. मीना ----- गीत गाती है।
- छ. ईशा ने ----- अपने बाल साफ किए।
- ज. वह ----- पार्क की ओर चली गई।

प्रश्न-9 पृष्ठ संख्या 67 से 80 तक सुलेखन लिखें।